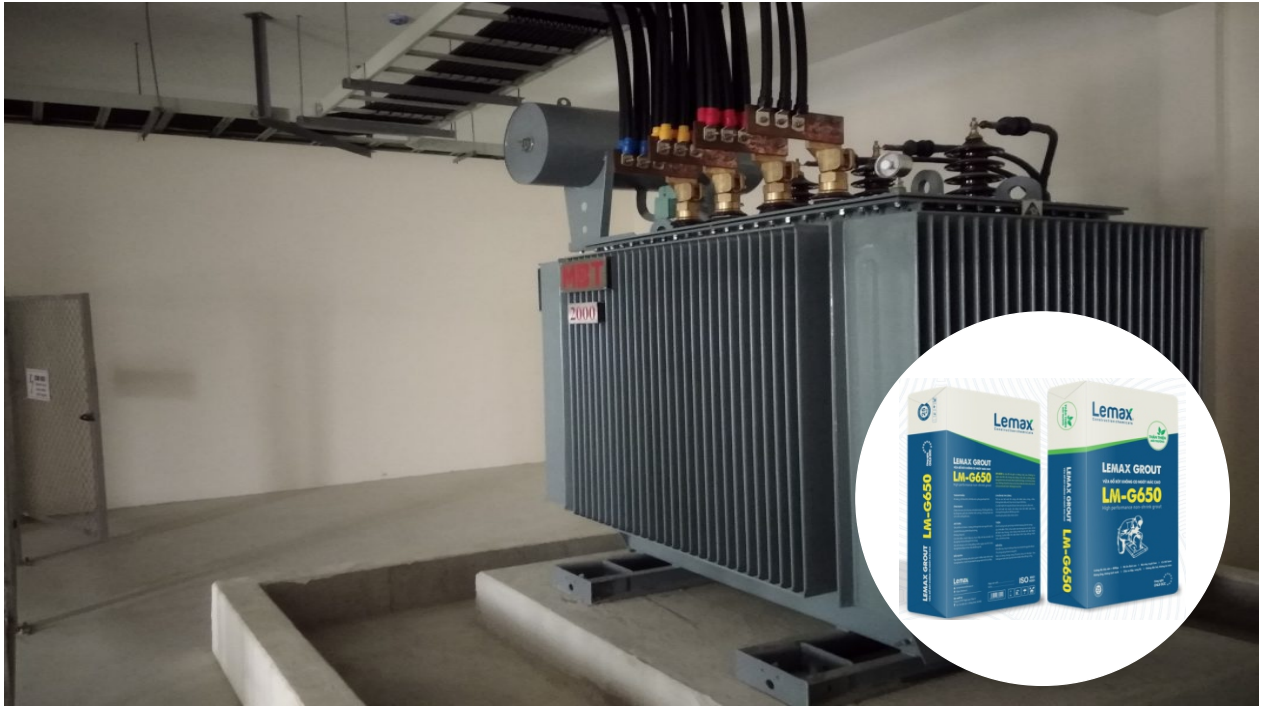


## CONSTRUCTION METHOD

Foundations of machines and heavy equipment using non-shrink **LEMAY Grout LM-G650**



### Fields

Repairing concrete, filling floor-wall holes, foundation for machine base, pouring pre-engineered steel column base and joints using **Lemax Grout LM-G650**

### Product Description

**Lemax Grout LM-G650** is a pre-mixed powder technical grout that only needs to be mixed with clean water in the correct proportions to get the best grout for pouring or pumping applications.

### Application

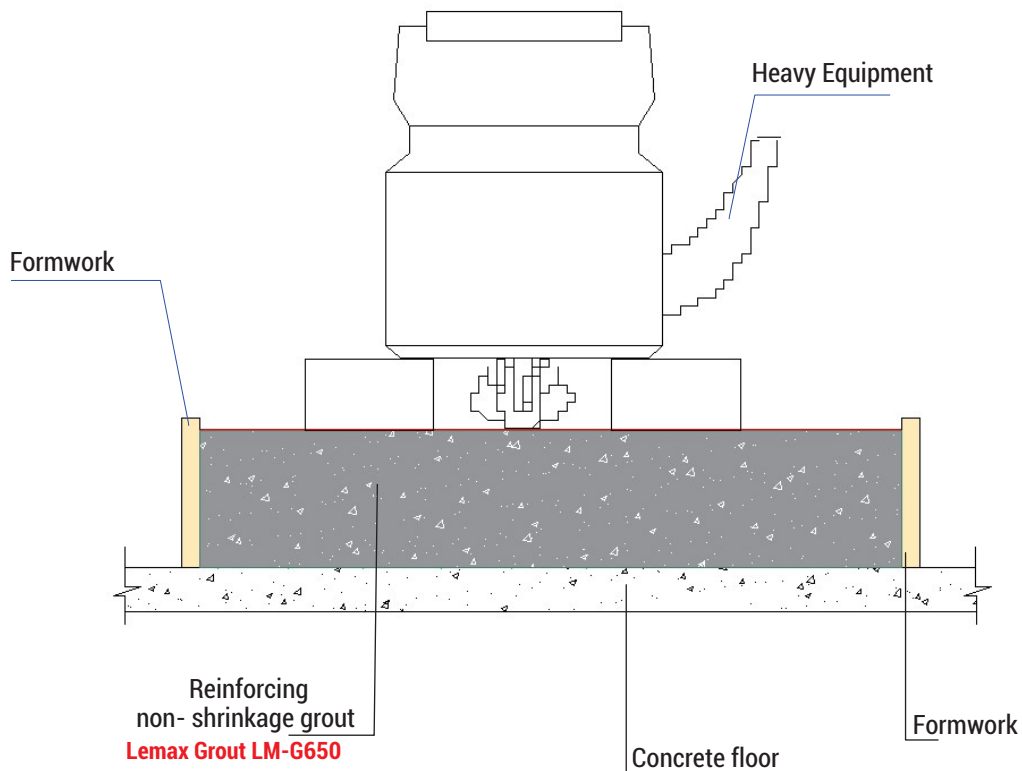
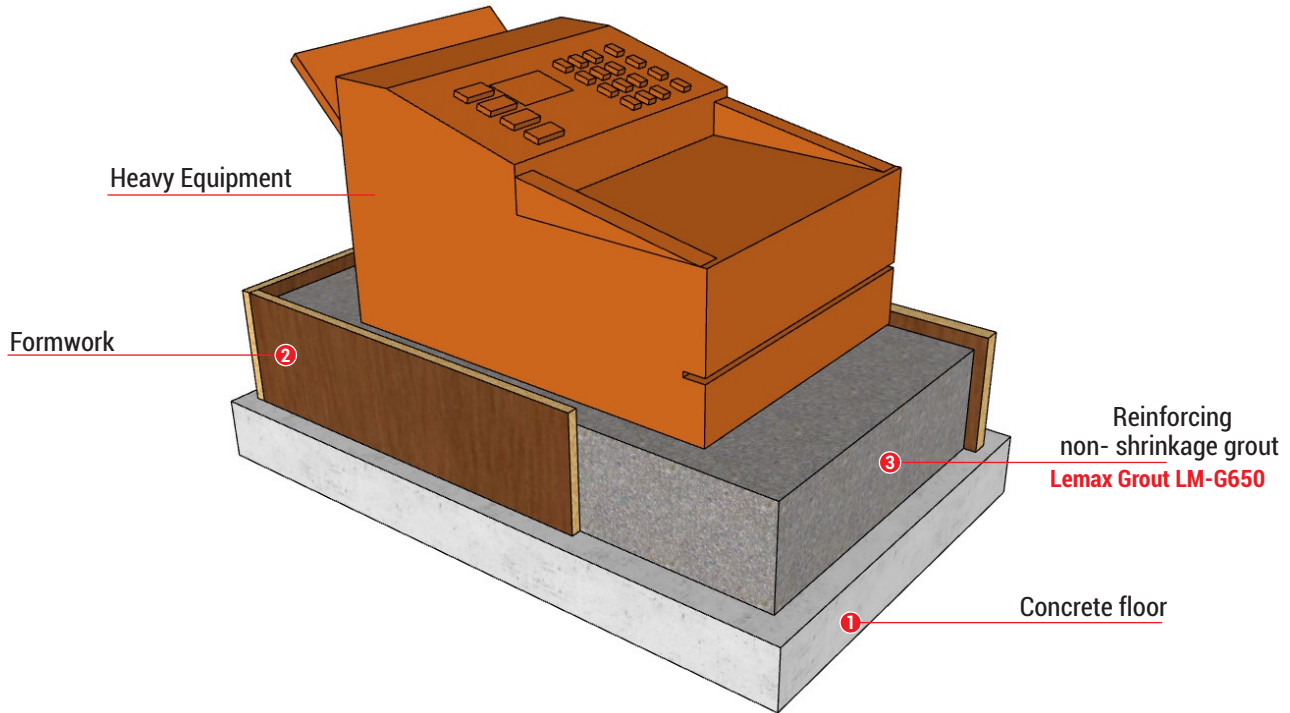
Repairing concrete, filling in floor-wall holes, foundations for machine base, pouring pre-engineered steel column bases, sealing gaskets, connecting rods... Use for both vertical and horizontal surfaces.

### Advantage features

- Excellent fluidity, easy to use
- Good dimensional stability
- Fast Strength Development Rate High Strength
- No water separation
- High strength
- **Non-toxic, non-corrosive**
- Impact resistance, vibration
- The grout can be pumped with a suitable pump




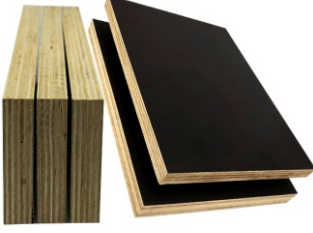



## Foundations of machines and heavy equipment using non-shrink LEMAX Grout LM-G650

### System structure



## Foundations of machines and heavy equipment using non-shrink LEMAX Grout LM-G650

### Product pictures and construction tools and equipment

		
Non-shrink grout	Stirrer	Hand chisel machine
		
Formwork	Material mixing bin	Hammer, chisel
		
Cleaning brush		

### Application

#### • APPLYING LEMAX Grout LM-G650

##### ▪ Surface preparation

- Clean concrete surface with broom or high-pressure water jet, free from impurities and chemicals, and solid.
- Moisten the surface with clean water before grouting.
- Formwork installation may use formwork made of wood, steel or other materials as the case may be, but must be rigid, watertight and held firmly to prevent warping under the pressure of the grout until the grout has hardened.
- Before installation, it is recommended to apply mold lubricant on the inside of the formwork for easy removal.

##### ▪ Mixing

- Stir with hand mixer at slow speed (600 rpm) for 3 minutes.
- Put clean water into the mixing container first, slowly add the grout after while the stirrer is running, mix well until a smooth, homogeneous, liquid mixture is obtained.
- Ratio of mixing water is 15% by weight of grout.

## Foundations of machines and heavy equipment using non-shrink LEMAX Grout LM-G650

### ■ Construction

- The minimum application temperature is 10°C and the maximum is 40°C.
- The norm is 13.1 liters of grout/bag of 25kg
- Apply grout immediately after thoroughly mixing, maintaining pressure to keep the flow uninterrupted without interruption.
- Apply pouring grout as quickly as possible (pour within 20 minutes after mixing), must be poured continuously until finished.
- When grouting the structure, it is necessary to clean and saturate the surface & let it dry before application.
- Cure the surface immediately after the grout has just dried, with wet strength, or spray with specialized curing solutions.
- Clean construction equipment and tools with water immediately after construction is completed, before the material hardens.
- Hardened grout can only be removed by mechanical means.

### ■ Note

- Must comply with the minimum curing time of 3 days in exposed grout surfaces.
- Do not add cement or sand to the pouring grout mix.
- Storage: Store in a dry place, do not stack more than 10 bags for a long time.
- Shelf life: Minimum 6 months if stored properly in original unopened packaging.

### Images of construction steps

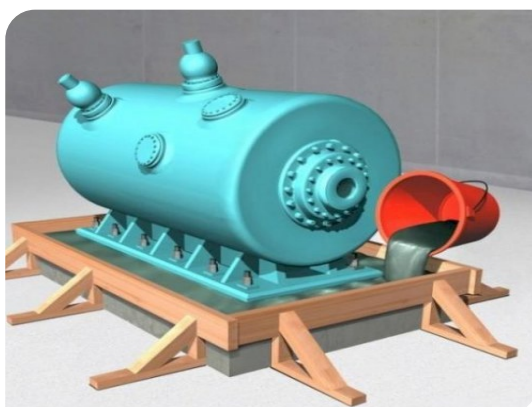
(Images are for reference only)



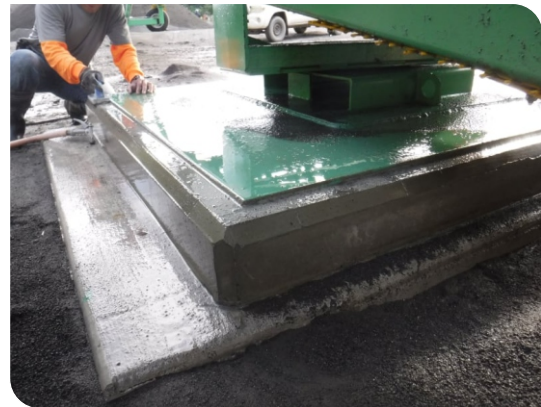
Surface cleaning



Installation of formwork



Grouting construction



Foundation of machine base after finishing